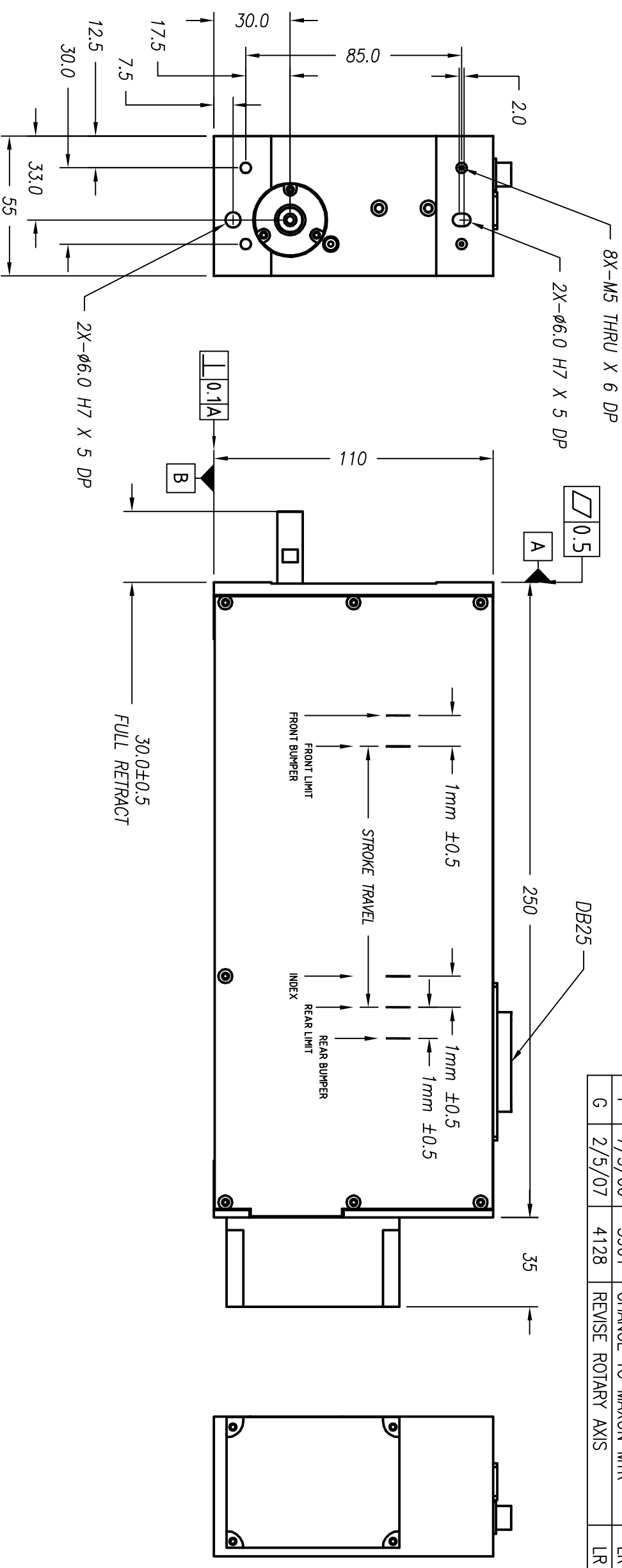


NOTES: (UNLESS OTHERWISE SPECIFIED)

1. ALL DIMENSIONS ARE IN MM UNLESS OTHERWISE NOTED.
2. ALL DIMENSIONS APPLY AFTER PLATING.
3. ACTUATOR SPECIFICATIONS:
 - LINEAR STROKE: 100.0 MM
 - FORCE CONSTANT: 14.7 N/AMP
 - PEAK FORCE: 24.5 N @ 1.6 AMPS (24 VDC)
 - CONTINUOUS FORCE: 14.7 N @ 1 A (24VDC)
 - COIL DC RESISTANCE: 15.1 OHMS @ 22°C
 - LINEAR ENCODER RESOLUTION: 0.5, 1.0, 5.0 um
 - ENCODER ACCURACY: ±4 COUNTS
- THETA SPECIFICATION: (DIRECT OUTPUT SHAFT)
- ROTATION ANGLE: 360° CONTINUOUS
- PEAK TORQUE: 0.2 Nm (4.0 A, 24 VDC)
- CONTINUOUS TORQUE: 0.10 Nm @2.15 A (24 DCV)
- MAXIMUM RPM : 500 (WITH 0 LOAD & VACUUM)
- GEAR RATIO: NONE (DIRECT DRIVE)
- ROTARY MOTOR TYPE: DC BRUSH
- ENCODER RESOLUTION: 20000 CPR
- ENCORER ACCURACY: ± 5 COUNTS (0° BACK LASH)
- OPERATING TEMPERATURE: -10°C TO +65°C
- MOVING MASS: 800 GRAMS
- TOTAL MASS: 3950 GRAMS



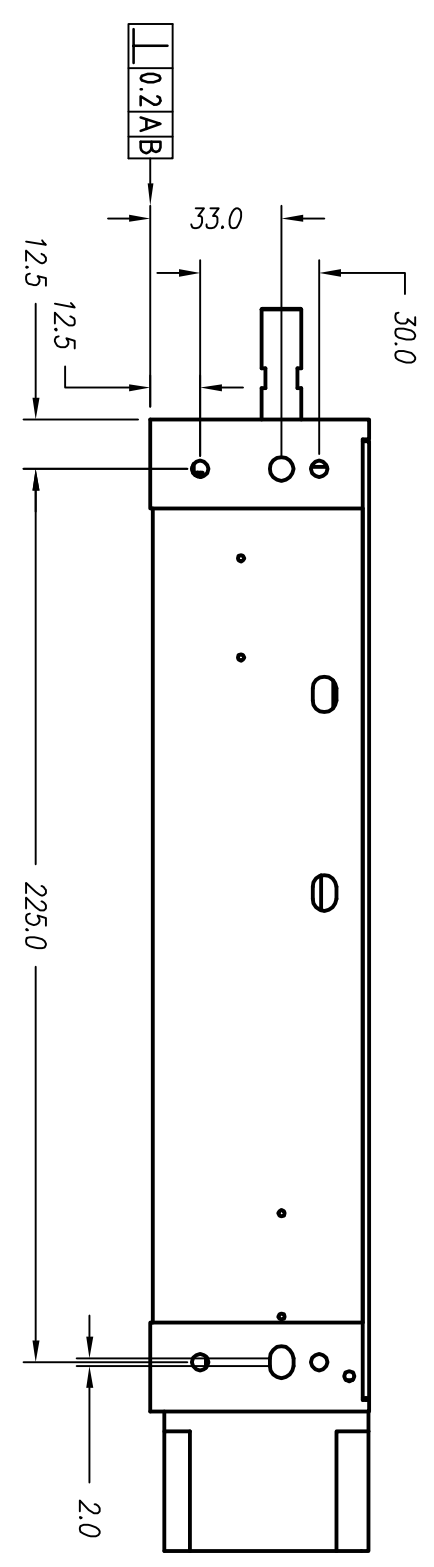
REVISIONS

REV	DATE	ECN	DESCRIPTION	APP
F	7/5/06	3961	CHANGE TO MAXON MTR	LR
G	2/5/07	4128	REVISE ROTARY AXIS	LR

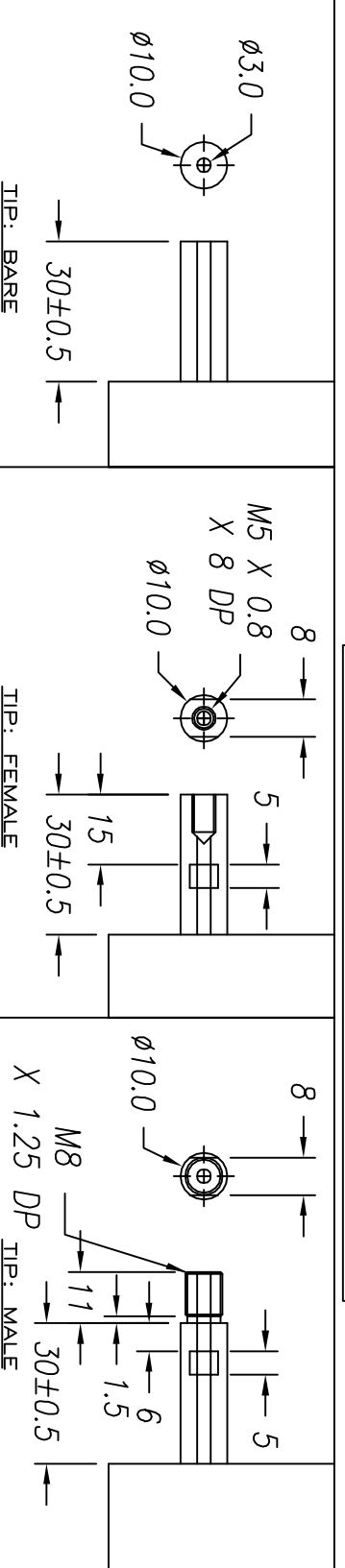
1	+5VDC
2	+5V RETURN
3	ROTARY MOTOR-
4	LINEAR PHASE A-
5	NC
6	TBD
7	COIL +
8	COIL +
9	LINEAR PHASE B-
10	ROTARY MOTOR+
11	LIMIT + (TBD)
12	LIMIT - (TBD)
13	ROTARY PHASE B-

14	LINEAR PHASE A+
15	ROTARY PHASE A+
16	LINEAR PHASE B+
17	ROTARY PHASE B+
18	LINEAR INDEX +
19	COIL -
20	COIL -
21	ROTARY PHASE A-
22	ROTARY COARSE INDEX
23	LINEAR INDEX -
24	ROTARY FINE INDEX
25	ROTARY FINE INDEX

DB-25P PINOUT



SIGNATURE NEEDED FOR ORDER APPROVAL
 SIGN _____ DATE _____
 APPROVAL NOT RECEIVED WITHIN
 48 HOURS MAY AFFECT DELIVERY



<p>TOLERANCES ARE:</p> <table border="0"> <tr><td>X</td><td>±</td><td>0.50</td></tr> <tr><td>XX</td><td>±</td><td>0.1</td></tr> <tr><td>XXX</td><td>±</td><td>0.05</td></tr> <tr><td>X.XXX</td><td>±</td><td>0.1°</td></tr> <tr><td>ANGULARITY</td><td>±</td><td>0.01</td></tr> <tr><td>CONCENTRIC</td><td>±</td><td>0.05</td></tr> <tr><td>ROUNDNESS</td><td>±</td><td>0.2 MAX</td></tr> <tr><td>EDGE BREAK</td><td></td><td>0.1 MAX</td></tr> <tr><td>CHAMFER</td><td></td><td>0.1 MAX</td></tr> </table>		X	±	0.50	XX	±	0.1	XXX	±	0.05	X.XXX	±	0.1°	ANGULARITY	±	0.01	CONCENTRIC	±	0.05	ROUNDNESS	±	0.2 MAX	EDGE BREAK		0.1 MAX	CHAMFER		0.1 MAX	<p>MATERIAL: ALUMINUM 6061-T6</p>		<p>REF. NUMBER LAR55-100-5-G</p>	
X	±	0.50																														
XX	±	0.1																														
XXX	±	0.05																														
X.XXX	±	0.1°																														
ANGULARITY	±	0.01																														
CONCENTRIC	±	0.05																														
ROUNDNESS	±	0.2 MAX																														
EDGE BREAK		0.1 MAX																														
CHAMFER		0.1 MAX																														
<p>HEAT TREAT: / RC</p>		<p>DESIGNED BY: TOAN VU</p>		<p>CHECKED BY:</p>																												
<p>MACHINE FINISH: 1.6/</p>		<p>DRAWN BY: L. RAKOW</p>		<p>APPROVED BY:</p>																												
<p>EXCEPT NOTED.</p>		<p>DATE: 7/5/06</p>		<p>DATE:</p>																												
<p>PROTECTIVE FINISH ELECTROLESS NICKEL</p>		<p>DATE: 2/5/07</p>		<p>DATE:</p>																												
<p>SCALE: NONE</p>		<p>PART NAME: LAR55-100-5</p>		<p>CONTRACT: STD</p>																												
<p>DWG SIZE: B</p>		<p>SCALE: DO NOT SCALE DWG</p>		<p>SHEET NUMBER: 1 OF 1</p>																												
<p>REV. NUMBER: G1</p>		<p>SCALE: NONE</p>		<p>PART NUMBER: LAR55-100-5</p>																												

SMAC